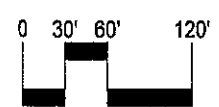




Cromwell High School Athletic Complex Improvements

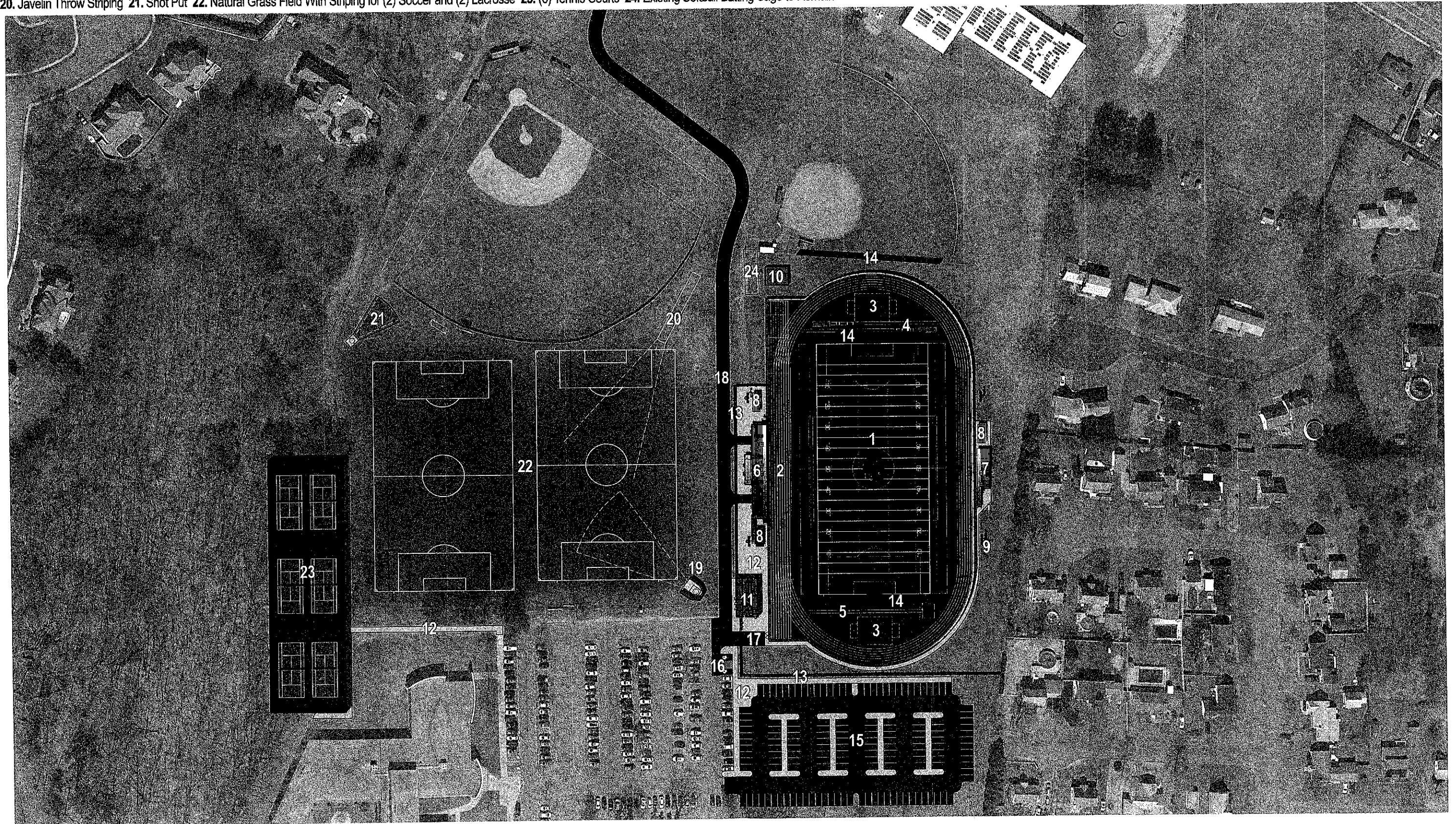
Existing Conditions

Cromwell, Connecticut
April, 2023



Legend:

- 1. Synthetic Turf Field
- 2. 6 Lane Oval and 8 Sprint Lanes
- 3. High Jump Areas
- 4. Long/Triple Jump Runways
- 5. Pole Vault Runway
- 6. Elevated Home Bleachers (~500 Seats) with Press Box
- 7. Elevated Visitor's Bleachers (~200 Seats)
- 8. Portable Bleachers
- 9. Sports Lighting (4 Poles)
- 10. Track Storage Building
- 11. Restroom/Concession Building
- 12. Concrete Sidewalks
- 13. Perimeter Fencing
- 14. Safety Netting
- 15. Parking Lot with ~150 Spaces
- 16. Relocated Handicap Parking Spaces
- 17. Emergency Vehicle Parking
- 18. Internal Access Drive
- 19. Discus Cage
- 20. Javelin Throw Striping
- 21. Shot Put
- 22. Natural Grass Field With Striping for (2) Soccer and (2) Lacrosse
- 23. (6) Tennis Courts
- 24. Existing Softball Batting Cage to Remain

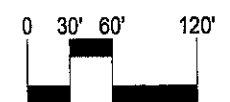


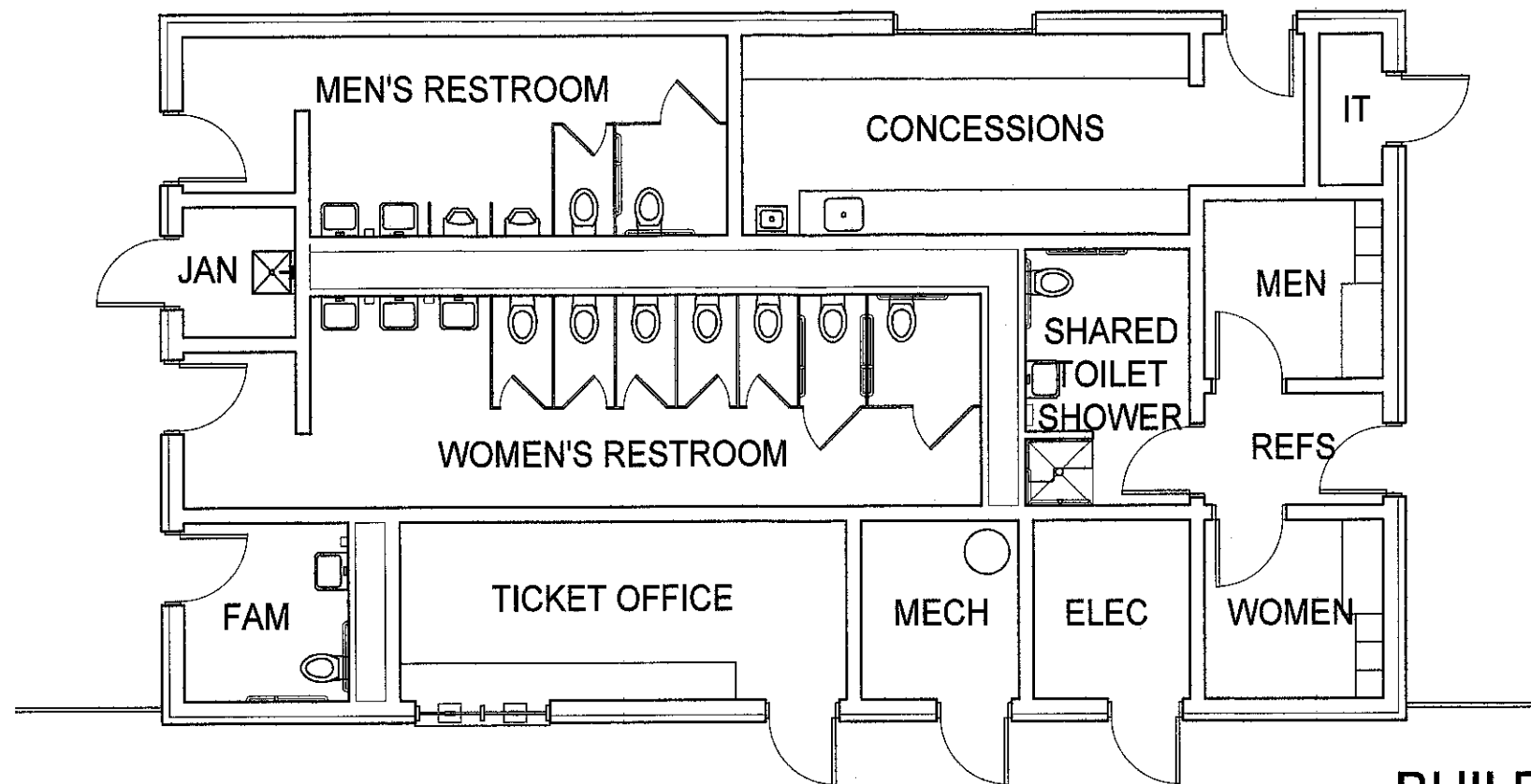
Cromwell High School Athletic Complex Improvements

Site Concept Plan- Preferred Concept

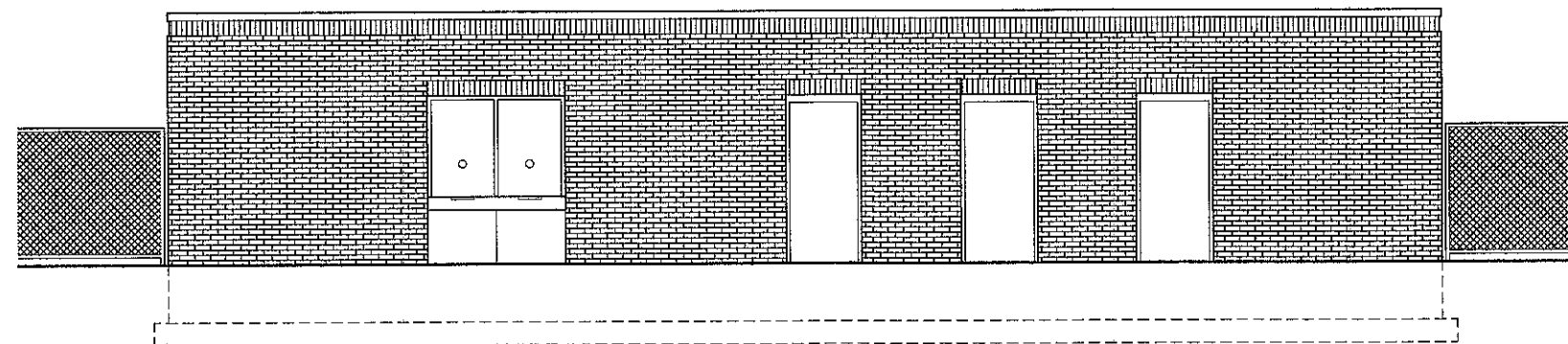
Cromwell, Connecticut

April, 2023





BUILDING PLAN



WEST ELEVATION



**CROMWELL STADIUM - RESTROOM BUILDING
(600-650 SPECTATORS)**